



BD35F Direct Current Compressor R134a, 12-24V DC, 10-45V Solar & 100-240V AC 50/60Hz

General

Code number (without electronic units)	101Z0204
Electronic unit - standard	101N0210, 30 pcs: 101N0211
Electronic unit 12-24V DC - with metal shielding	101N0220, 30 pcs: 101N0221
Electronic unit 12-24V DC - AEO & metal shielding	101N0320, 30 pcs: 101N0321
Electronic unit 10-45V - solar applications	101N0400, 30 pcs: 101N0401
Electronic unit 12-24V DC & 100-240V AC 50/60Hz	101N0500, 36 pcs: 101N0501
Electronic unit 12-24V DC - automotive applications	101N0600, 30 pcs: 101N0601
Electronic unit 12-24V DC - automotive applications	101N0630, 30 pcs: 101N0631
Approved compressor - electronic unit combinations	refer to <i>Instructions</i> for 101N0xxx
Additional approvals	e4, C-Tick
Compressors on pallet	150

Application

Application	LBP/MBP/HBP
Evaporating temperature °F	-20 to 50
Voltage range (DC & AC)	12-24V DC & 100-240V AC 50/60Hz 10-45V DC for solar applications
Max. condensing temperature continuous (short) °F	140 (158)
Max. winding temperature continuous (short) °F	257 (275)

Cooling requirements

Application	LBP	MBP	HBP
32°C	S	S	S
38°C	S	S	S
43°C	S	S	S

Remarks on application: Fan cooling F₁ depending on application and speed.

Motor

Motor type	Variable speed
Resistance, all 3 windings (25°C) Ω	2.2

Design

Displacement	cu.in.	0.12
Oil quantity (type)	fl.oz.	5.1 (polyolester)
Maximum refrigerant charge	oz.	10.5
Free gas volume in compressor	fl.oz.	29.6
Weight - Compressor/Electronic unit	lbs.	9.5/0.55

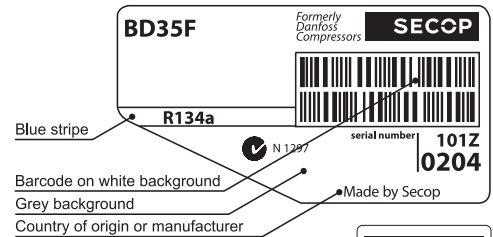
Standard battery protection settings (refer to 101N0xxx *Instructions* for optional settings)

Voltage	12V	24V
Cut out	VDC 10.4	VDC 22.8
Cut in	VDC 11.7	VDC 24.2

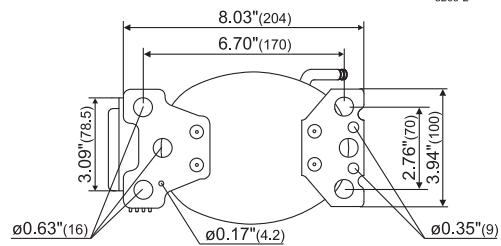
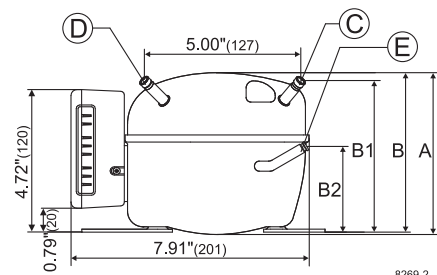
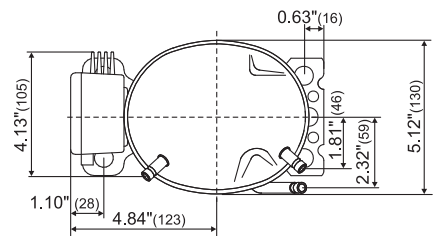
Dimensions

Height	inch	A	5.39
		B	5.32
		B1	5.04
		B2	2.87
Suction connector	location/l.D. mm angle	C	0.252-0259 41.5°
	material comment		Cu-plated steel Al cap
Process connector	location/l.D. mm angle	D	0.252-0259 45°
	material comment		Cu-plated steel Al cap
Discharge connector	location/l.D. mm angle	E	0.202-0.205 21°
	material comment		Cu-plated steel Al cap

Remarks: **inch connectors**



- S = Static cooling normally sufficient
- O = Oil cooling
- F₁ = Fan cooling 1.5 m/s (compressor compartment temperature equal to ambient temperature)
- F₂ = Fan cooling 3.0 m/s necessary
- SG = Suction gas cooling normally sufficient
- = not applicable in this area



Capacity (EN 12900 Household/CECOMAF) 12V DC, static cooling watt

rpm \ °F	-20	-13	-10	0	10	14	20	30	40	41	45	50
2,000	74	101	113	159	214	238	280	361	458	471	514	575
2,500	95	127	142	199	268	298	351	452	574	586	643	
3,000	104	138	155	222	307	344	411	535	681			
3,500	119	153	171	248	349	396	473	620				

Capacity (ASHRAE LBP) 12V DC, static cooling watt

rpm \ °F	-20	-13	-10	0	10	14	20	30	40	41	45	50
2,000	17.5	23.9	26.8	37.6	50.6	56.6	66.4	85.5	109	111	122	136
2,500	22.2	29.9	33.4	46.9	63.2	70.7	83.0	107	136	139	152	
3,000	24.5	32.4	36.4	52.3	72.4	81.7	97.0	126	161			
3,500	27.9	35.9	40.3	58.5	82.5	93.6	112	147				

Power consumption 12V DC, static cooling watt

rpm \ °F	-20	-13	-10	0	10	14	20	30	40	41	45	50
2,000	19.1	23.5	25.3	30.8	36.1	38.3	41.3	46.6	52.5	53.4	55.7	59.1
2,500	25.2	31.0	33.0	40.7	47.4	50.2	54.0	60.7	67.7	68.7	71.5	
3,000	31.0	35.8	38.0	45.9	54.5	58.4	63.4	72.2	80.6			
3,500	37.5	42.9	45.4	54.5	64.4	68.9	74.9	85.7				

Current consumption (for 24V applications the following must be halved) A

rpm \ °F	-20	-13	-10	0	10	14	20	30	40	41	45	50
2,000	1.59	1.96	2.10	2.57	3.01	3.19	3.44	3.89	4.37	4.45	4.64	4.93
2,500	2.10	2.58	2.77	3.38	3.95	4.18	4.49	5.05	5.63	5.73	5.95	
3,000	2.61	3.01	3.19	3.86	4.58	4.89	5.32	6.06	6.76			
3,500	3.14	3.58	3.79	4.55	5.38	5.74	6.25	7.15				

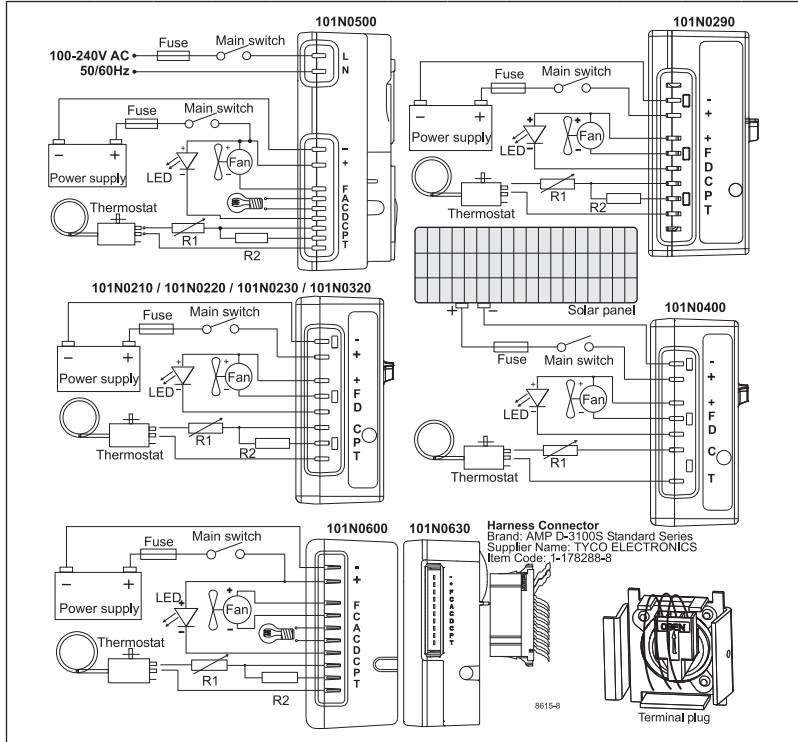
COP (ASHRAE LBP) 12V DC, static cooling W/W

rpm \ °F	-20	-13	-10	0	10	14	20	30	40	41	45	50
2,000	3.88	4.30	4.48	5.16	5.93	6.24	6.80	7.74	8.73	8.82	9.23	9.73
2,500	3.75	4.09	4.26	4.89	5.64	5.93	6.50	7.46	8.47	8.53	9.00	
3,000	3.36	3.86	4.08	4.83	5.63	5.90	6.48	7.41	8.44			
3,500	3.16	3.56	3.77	4.56	5.42	5.73	6.31	7.23				

COP (EN 12900 Household/CECOMAF) 12V DC, static cooling W/W

rpm \ °F	-20	-13	-10	0	10	14	20	30	40	41	45	50
2,000	0.92	1.02	1.06	1.22	1.40	1.48	1.60	1.82	2.06	2.08	2.17	2.29
2,500	0.89	0.97	1.01	1.15	1.33	1.41	1.53	1.76	2.00	2.02	2.12	
3,000	0.79	0.90	0.96	1.13	1.32	1.40	1.52	1.74	1.98			
3,500	0.75	0.84	0.89	1.07	1.28	1.36	1.49	1.70				

Test conditions	EN 12900/CECOMAF	ASHRAE LBP
Condensing temperature	131°F	130°F
Ambient temperature	90°F	90°F
Suction gas temperature	90°F	90°F
Liquid temperature	no subcooling	90°F



Operational errors shown by LED (optional)

Error code	Error type
5	Thermal cut-out of electronic unit (If the refrigeration system has been too heavily loaded, or if the ambient temperature is high, the electronic unit will run too hot).
4	Minimum motor speed error (If the refrigeration system is too heavily loaded, the motor cannot maintain minimum speed at approximately 1,850 rpm).
3	Motor start error (The rotor is blocked or the differential pressure in the refrigeration system is too high (>5 bar)).
2	Fan over-current cut-out (The fan loads the electronic unit with more than 1A _{peak}).
1	Battery protection cut-out (The voltage is outside the cut-out setting).

Compressor speed

Electronit unit Code number	Resistor (R1) [Ω] calculated values	Motor speed [rpm]	Control circuit current [mA]
101N0210	0	2,000	5
101N0220	277	2,500	4
101N0500	692	3,000	3
101N0600	1523	3,500	2
101N0320	0	AEO	6
101N0400	173	2,000	5
with AEO	450	2,500	4
	865	3,000	3
	1696	3,500	2

In AEO (Adaptive Energy Optimizing) speed mode the BD compressor will always adapt its speed to the actual cooling demand.

Wire Dimensions DC

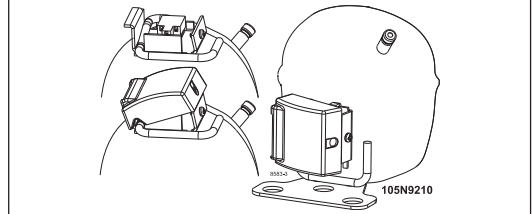
Cross section [mm²]	Size AWG [Gauge]	Max. length* 12V operation		Max. length* 24V operation	
		[m]	[ft.]	[m]	[ft.]
2.5	12	2.5	8	5	16
4	12	4	13	8	26
6	10	6	20	12	39
10	8	10	33	20	66

*Length between battery and electronic unit

Wire Dimensions AC

Cross section min. 0.75 mm² or AWG 18

Accessories for BD35F	Code number
Bolt joint for one comp.	Ø: 5/8 in. 118-1917
Bolt joint in quantities	Ø: 5/8 in. 118-1918
Snap-on in quantities	Ø: 5/8 in. 118-1919
Remote kit (without cable)	105N9210



AC line cord UL approved	105N9520
AC line cord VDE approved	105N9530
DC usage:	Automobile fuse 12V: 15A DIN 7258 24V: 7.5 A Main switch min. 20A
AC usage:	Fuse, 100-240V min. 4A Main switch min. 6A

Not deliverable from Secop

Danfoss can accept no responsibility for possible errors in catalogues, brochures and other printed material. Danfoss reserves the right to alter its products without notice. This also applies to products already on order provided that such alterations can be made without consequential changes being necessary in specifications already agreed. All trademarks in this material are property of the respective companies. Danfoss and the Danfoss logotype are trademarks of Danfoss A/S. All rights reserved.